

# QUANTUM

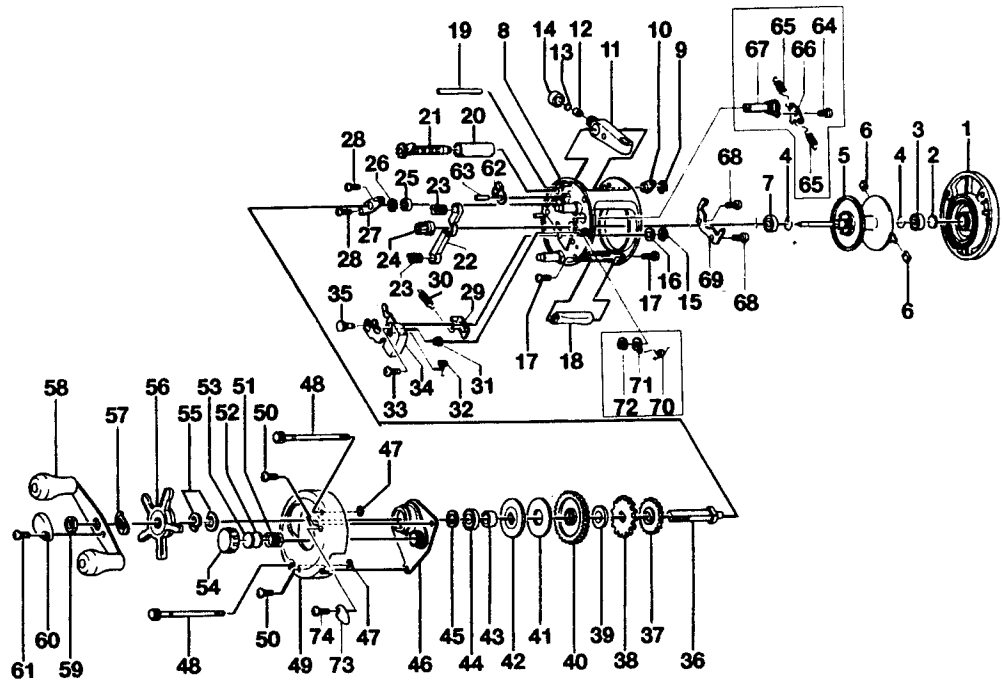
# IR3WL

### SPECIFICATIONS:

Left Hand Retrieve  
 Medium Heavy Freshwater  
 Light Saltwater  
 180 yds/14 lb. Line Capacity  
 5.2:1 Ratio  
 10.0 oz. Weight  
 Thumb Bottom Clutch  
 Posi-Lok Anti-Reverse  
 3 Ball Bearings

### FEATURES:

15-point Posi-Lok anti-reverse  
 Centrifugal Brake Anti-Backlash  
 System  
 Machined, one-piece aluminum  
 frame  
 Rugged, one-piece aluminum  
 side plates  
 Machine-forged aluminum spool  
 Brass Magnum Gears  
 Low-profile recessed reel foot  
 Multi-disc drag system  
 On/Off bait click (wide spool  
 models only)  
 Color: Gold



Key No.	Part No.	Description	Price	Key No.	Part No.	Description	Price
1	EV324-01	Right Side Cover Assy	9.75	38	JX083-01	Trip Ratchet	.93
2	XX038-02	Spool Shaft Washer	.26	39	QW111-01	Ratchet Washer	.26
3	JX106-01	Bearing - Spool Shaft	6.33	40	EV012-01	Drive Gear	7.65
4	JX080-01	Clip Ring	.26	41	JX059-01	Drag Disc	1.44
5	JV321-01	Spool Assy	13.75	42	JX045-01	Drag "D" Washer	.88
6	XX044-01	Brake Shoe "B"	.26	43	JX052-01	Spacer	.67
7	JX106-01	Bearing - Spool Shaft	6.33	44	TW058-01	Bearing - Crank Shaft (U)	7.21
8	JV301-01	Frame Assy	29.65	45	JX038-01	Crank Shaft Washer	.31
9	QW120-01	E-Clip - Worm Shaft	.26	46	EV066-01	Crank Shaft Guide	3.35
10	JX067-01	Bushing - Worm Shaft	.31	47	JX073-01	O-Ring - Thumb Screw	.31
11	JX347-02	Line Guide Carrier Assy	2.32	48	JX074-04	Thumb Screw	1.24
12	JX006-01	Line Guide Pawl	1.80	49	JV023-01	Left Side Cover	13.55
13	JX035-01	Washer - Line Guide Pawl	.26	50	QW123-01	Screw - Left Side Cover	.15
14	JX007-02	Screw - Line Guide Carrier	.52	51	JX105-01	Spring - Tension Knob	.31
15	NX092-01	E-Clip - Kick Lever Guide Post	.30	52	QW032-02	Washer - Spool Tension	.26
16	XX035-01	Washer - Kick Lever Guide	.26	53	JX082-01	Washer - Cushion	.21
17	JX050-01	Screw - Thumb Rest	.31	54	XX033-01	Spool Tension Knob	2.82
18	XX009-02	Thumb Rest	.62	55	JX046-01	Spring "D" Washer	.67
19	XX061-01	Line Guide Carrier Guide	.98	56	EV055-01	Star Drag	2.45
20	XX016-01	Worm Shaft Guide	.72	57	NX054-01	Handle Washer	.26
21	XX372-01	Worm Shaft Assy	7.42	58	XX318-01	Handle Assy	7.00
22	EV025-01	Pinion Yoke	.55	59	QW003-02	Handle Nut	.36
23	JX040-01	Yoke Spring	.21	60	JX034-02	Handle Nut Cap	.36
24	EV011-01	Pinion Gear	5.40	61	QW123-01	Handle Nut Cap Screw	.15
25	JX017-01	Bushing - Crank Shaft (L)	.77	62	JX363-01B	Anti-Reverse Pawl Assy	2.52
26	QW120-01	E-Clip - Crank Shaft	.26	63	JX098-01	Post - Anti-Reverse Pawl	.41
27	JX002-01	Retainer - Crank Shaft	.57	64	XX025-01	Screw - Clicker Pawl	.25
28	JX107-01	Screw - Crank Shaft Retainer	.15	65	JX110-01	Clicker Spring	.21
29	EV077-01	Kick Lever	.60	66	JV114-01	Clicker Pawl	.70
30	JX097-01	Spring - Kick Lever	.15	67	JX084-01	Clicker Cam	2.88
31	JX068-01	Bushing - Release Slider Guide	1.08	68	JX125-01	Screw - Clicker Spring Holder	.21
32	EV104-01	Spring - Release Slider	.25	69	JV103-01	Clicker Spring Holder	1.20
33	XX050-01	Screw - Release Slider	.15	70	EV022-01	Spring - Clicker Cam	.30
34	EV339-01	Release Slider Assy	1.80	71	JX041-01	Click Cam Actuator	.36
35	JX102-01	Post - Kick Lever Guide	.88	72	JX075-01	C-Clip - Click Cam	.21
36	JX008-02	Crank Shaft	2.88	73	JV109-01	Click Lever	.25
37	JX112-01	O/S Drive Gear	.46	74	QW053-05	Screw - Click Lever	.26

<b>MODEL INTRODUCED</b>	1996	<b>EFFECTIVE DATE OF PARTS LIST/DIAGRAM</b>	Oct. 1996	<b>DISCONTINUED</b>	N/A
-------------------------	------	---	-----------	---------------------	-----

Prices subject to change without notice. Prices do not include postage and handling.



MANUFACTURED BY QUANTUM REEL CO., INC., 2700 S. GARDNER AVENUE, TULSA, OK 74101, USA 918-831-6965